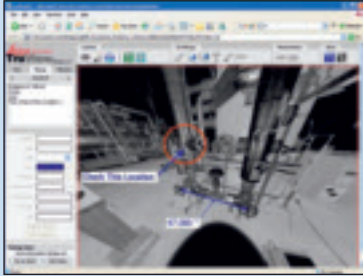


Leica Cyclone PUBLISHER & Leica TruView

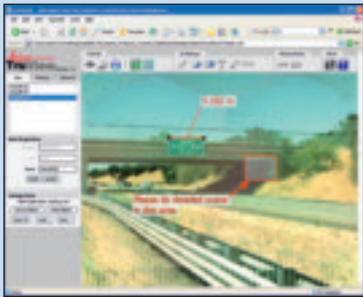
Free, easy viewing and measuring of laser scan point clouds



Simple to View & Measure via Web or via Local Files

Leica TruView software is for everyday professionals who want to easily view and measure rich, laser scan point clouds without having to be an expert in laser scanning, CAD, or 3D. All that's needed is a free license of Leica TruView and point cloud information generated by Leica Cyclone PUBLISHER. Publishing and viewing/measuring point clouds is now like publishing and reading Adobe PDF's. And just like using PDF, no formal training is required.

If the published point cloud data is on the web, you can view & measure via the web. If the published point cloud data is on local files, a CD, or an FTP site, then Leica TruView will also enable the same free, easy viewing & measuring. Leica TruView is available for free download from the Leica Geosystems HDS website, along with sample published point clouds.



Intuitive Viewing

Leica TruView lets professionals view, zoom in, or pan over point clouds naturally and intuitively. Using a simple "panoramic" or "bubble" viewer approach, you see High-Definition Survey™ point clouds on the computer screen just as if you were standing right where the laser scanner captured the scan data. Simple controls let you rotate the view just as if you were turning, raising or lowering your head. They also let you zoom in as if you had a magnifying lens or pan at will.

Easy Measuring and Markups

In TruView, users can click on a pixel in the image and extract real 3D coordinates or click on two pixels and extract distances. Results appear right on the point cloud image. Markups are also easy to create, save and share with your peers, your service provider, or with clients for more effective communications.

Versatile Publishing

For web-based sharing and viewing, any webmaster or professional with access to the web can post the TruView data files for immediate access anywhere in the world. Users can also pack up the files and distribute them directly as a file set. Point cloud data from Leica HDS scanners or any scanner with ASCII-based output can be published for use with Leica TruView.

Added Features

In addition to simple viewing, measurement, and markup, users can also control units of measure; extract coordinates in the same coordinate system as the point cloud; use call-out "leaders", text, rectangles and circles for markups; save specific views and markups with an associated camera view; and create simple "site maps" with easy-to-find scanner locations for point cloud viewing.

Integrated Suite of Leica Software Modules

Leica Cyclone consists of a fully integrated suite of individual software modules, including Leica Cyclone PUBLISHER and Leica TruView, with a common user interface and architecture. Leica Cyclone REGISTER quickly and accurately aligns point clouds captured from different scanning positions to a common coordinate system. Leica Cyclone MODEL is a fully-featured toolset for data processing and extraction, including 2D and 3D modeling for plant, civil, architectural and other projects. Leica Cyclone SURVEY, a subset of Cyclone MODEL, is ideal for surveyors. For efficiently viewing and processing scan data directly within specific CAD applications, Leica's CloudWorx family represents a full set of cost-effective options. Leica Cyclone VIEWER is a free, 3D view-only version that allows full fly-around 3D viewing and lets users view modeled objects in addition to point clouds, but does not include measurement or markup tools.

- when it has to be **right**

Leica
Geosystems

Leica Cyclone PUBLISHER & Leica TruView

Leica Cyclone PUBLISHER	Leica TruView	Benefits
<p>Publishing</p> <ul style="list-style-type: none"> - Sitemap as HTML with hot links to scanner locations, point cloud & image file sets - Panoramic point cloud & image file sets for viewing with Leica TruView <p>Visualization</p> <ul style="list-style-type: none"> - 3D navigation of point clouds, meshes and 3D models - Point cloud Level of Detail (LOD) for fast visualization - 3D model Level of Detail (LOD) for fast visualization - View point clouds with intensity mapping, image color mapping from HDS scanner camera, elevation based color mapping - View texture mapped colors from external digital cameras on point clouds - Limit Box for efficient viewing and interaction of selected regions - Limit Box Manager to organize multiple limit boxes - View scanner locations - Station Notation display relative to an alignment - Assign colors & visual reflectance or transparency to objects - Save/restore viewpoints - Save screen image as image file - Environmental lighting <p>Source/Data Import</p> <ul style="list-style-type: none"> - Cyclone database - ASCII (PTS, PTX)* - Zoller + Frohlich ZFS, ZFC* - Riegl .3DD* - COE (Cyclone Object Exchange)* - AutoCAD, MicroStation via COE Data Transfer Plug-in (free)* - CGP <p>* Import via Cyclone MODEL/SURVEY or via Cyclone PUBLISHER with Import</p> <p>Output/Data Export</p> <ul style="list-style-type: none"> - BMP, TIFF, JPEG, PNG - Ortho Image, GeoTIFF, TWF (World File) - Sitemap (as HTML), TruView 	<p>Viewing</p> <ul style="list-style-type: none"> - From each scanner position - Full 360° horizontal and 180° vertical view rotation about each scanner position - Full pan & zoom - Multi-threaded streaming with multiple level-of-detail (LOD) view loading - On demand loading of required LOD - Multi-layer image with direct access to linked geometric data <p>Measurement</p> <ul style="list-style-type: none"> - Accurate X,Y,Z coordinate per pixel - Accurate point-to-point distance with full pan-zoom interaction <p>Markup</p> <ul style="list-style-type: none"> - Rectangle and Circle/Ellipse - Leader line with arrowhead - Text - Point-to-point dimension label - Coordinate location dimension label - Meta data <ul style="list-style-type: none"> - Markup created by "User name" - Markup stamped with time/date <p>Markup Properties Control</p> <ul style="list-style-type: none"> - Entity color - Fill color - Line thickness - Transparency - Font type - Font size - Units control <p>Saved Views</p> <ul style="list-style-type: none"> - Automatic per markup set - Recallable - Renameable <p>Configuration</p> <ul style="list-style-type: none"> - Set default properties <p>Collaboration</p> <ul style="list-style-type: none"> - Saved views and markup sets import/export - Default property settings import/export 	<p>Rich Point Cloud Data Available to a Wide Audience</p> <p>Free, easy viewing & measuring combine with Web access to open the value of point cloud data and images to any professional.</p> <p>Wide Range of Applications</p> <p>Users can visualize a panoramic scene and accurately measure & review scanned data for plant as-builts, roadway and topographic mapping, building elevations, construction progress, heritage sites, forensic investigations and more.</p> <p>Quickly Check and Verify Dimensional Information</p> <p>All of the highly accurate dimensional and geo-referenced data is available at the full level of precision of the scanner.</p> <p>Easy to Learn and Use</p> <p>Thanks to intuitive viewing and access via a Web browser or Web page, no training or background in CAD, laser scanning, or 3D is required.</p> <p>System Requirements</p> <p>Leica Cyclone PUBLISHER</p> <p>Microsoft Windows XP (SP1 or higher), Windows 2000 (SP3 or higher with up to date security patches)</p> <p>2.0 GHz Pentium® 4 or higher/Pentium® M Processor 1.7 GHz or higher</p> <p>512 MB RAM (1GB or more recommended) SVGA or OpenGL accelerated graphics card; Ethernet network card, for licensing</p> <p>Leica TruView</p> <p>Microsoft Windows XP (SP1 or higher), Windows 2000 (SP3 or higher with up to date security patches)</p> <p>Microsoft Internet Explorer Version 6.0 or higher</p> <p>500 MHz Processor or higher</p> <p>256 MB RAM or higher;</p> <p>OpenGL accelerated graphics card</p>

Illustrations, descriptions and technical specifications are not binding and may change.
 Printed in Switzerland – Copyright Leica Geosystems AG, Heerbrugg, Switzerland, 2007.
 756916enUS – 1.07 – RDV